

Service Utilities Setup application

The service utilities are designed to preferably run on a removable drive, such as a USB Drive, however it can be installed within a single directory on a fixed drive.

If you are installing on a removable drive, Place a formatted USB Drive into the computer.

Download the latest version of Service Utilities from the iKeyCode site.

<http://ikeycode.hexagonmetrology.com/KeyDownload.aspx>

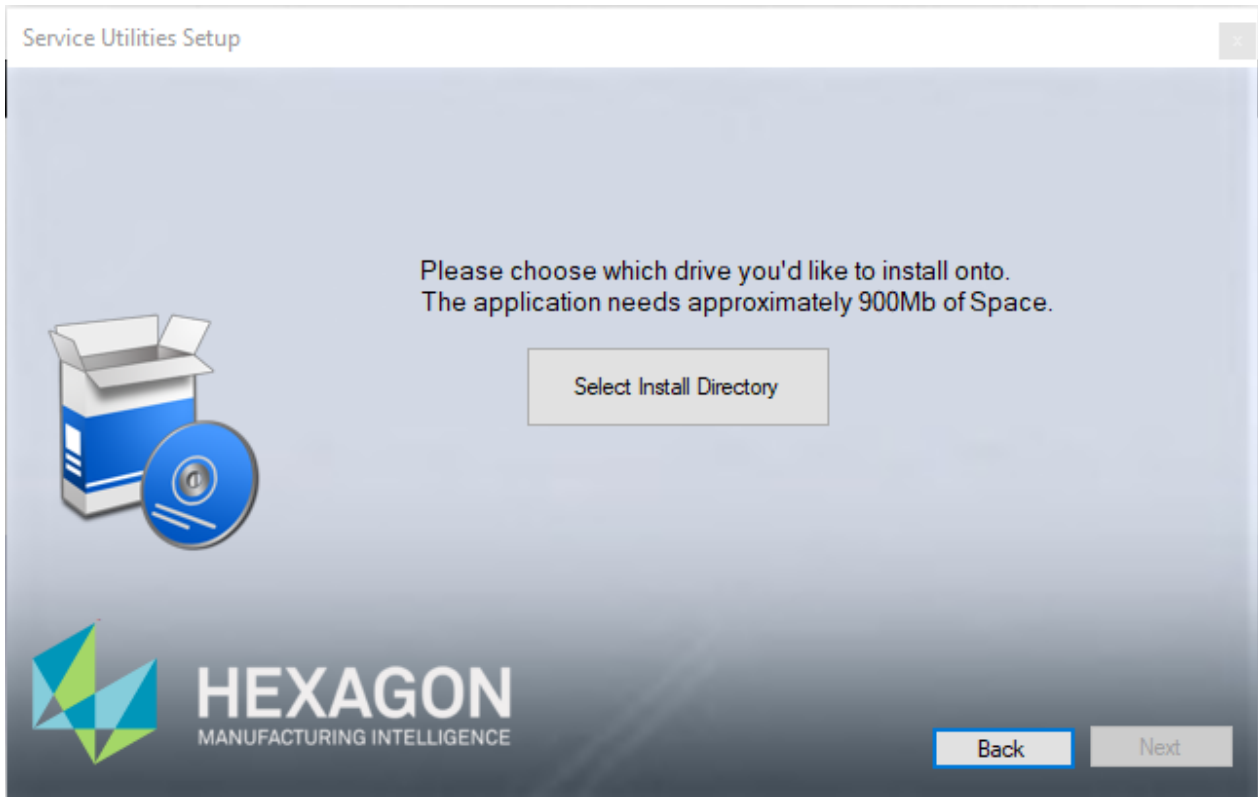
Extract the downloaded zip file into a temporary directory on your Hard Drive.

Right click on SvcUtilSetup.exe file and select Run as Admin to begin the setup process.

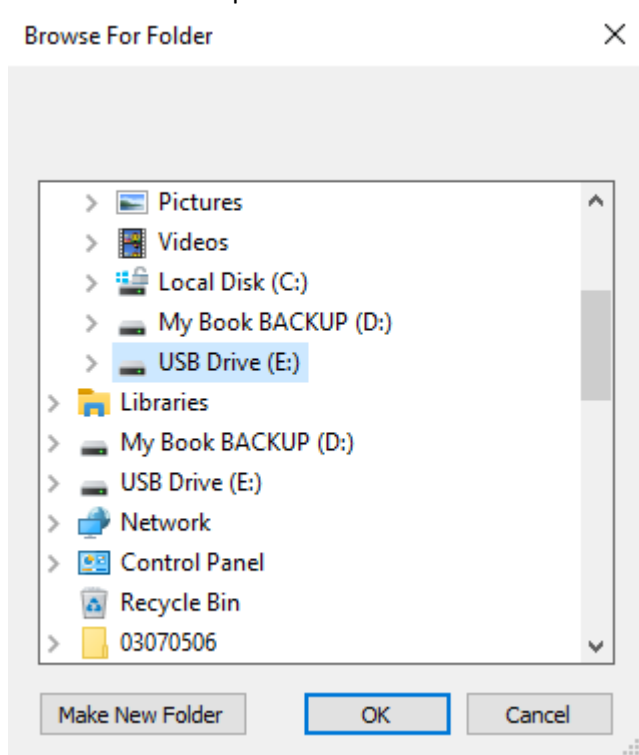


Click Begin –

Service Utilities Setup application

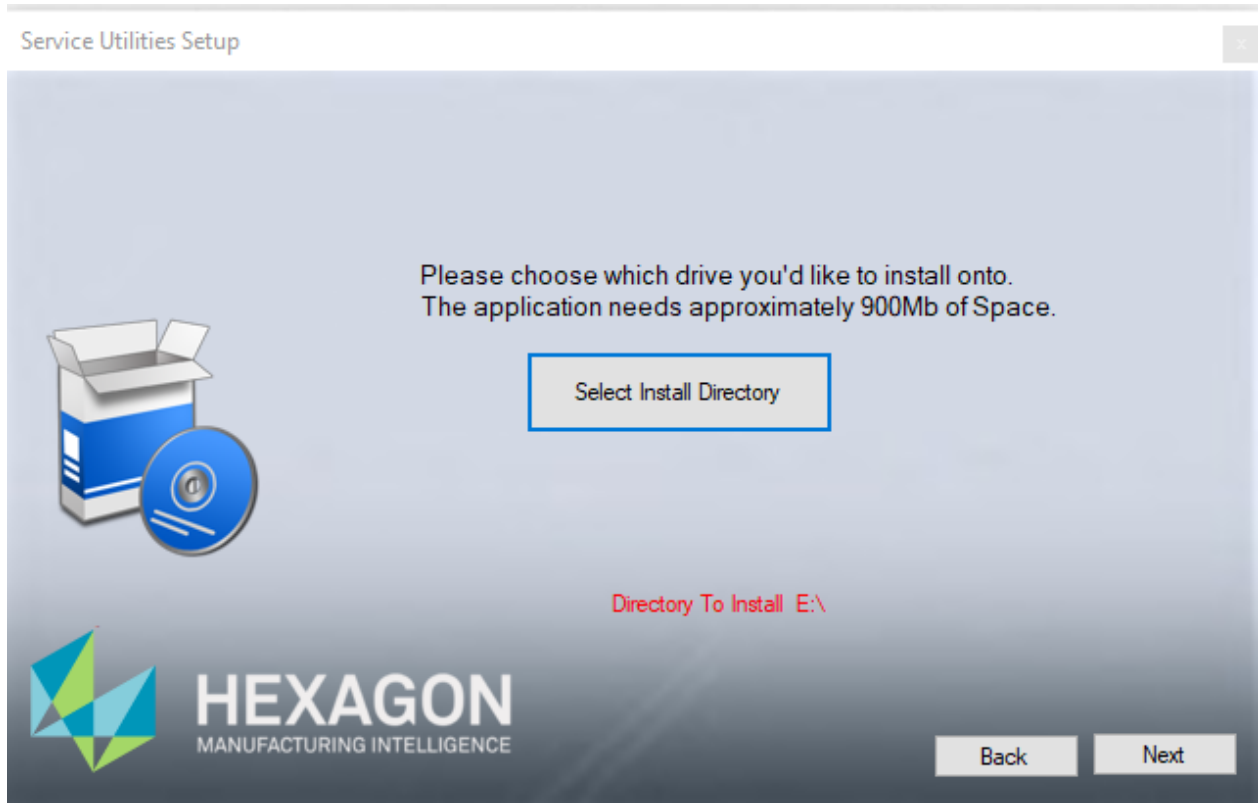


Click on Select Install Directory to select the drive which you would like to install the Service Utilities on. (This is the initial drive and path not the final name of the Service Utilities Directory)

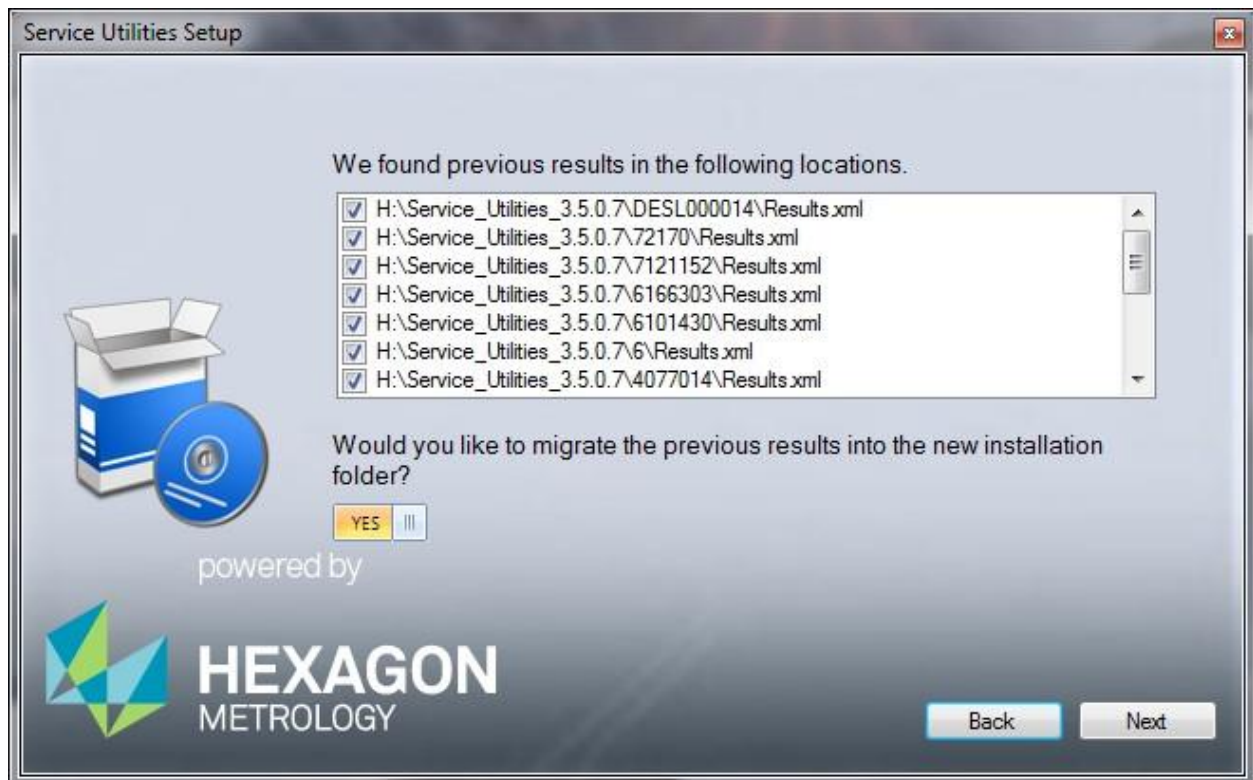


Once you have selected the Drive Click on OK.

Service Utilities Setup application

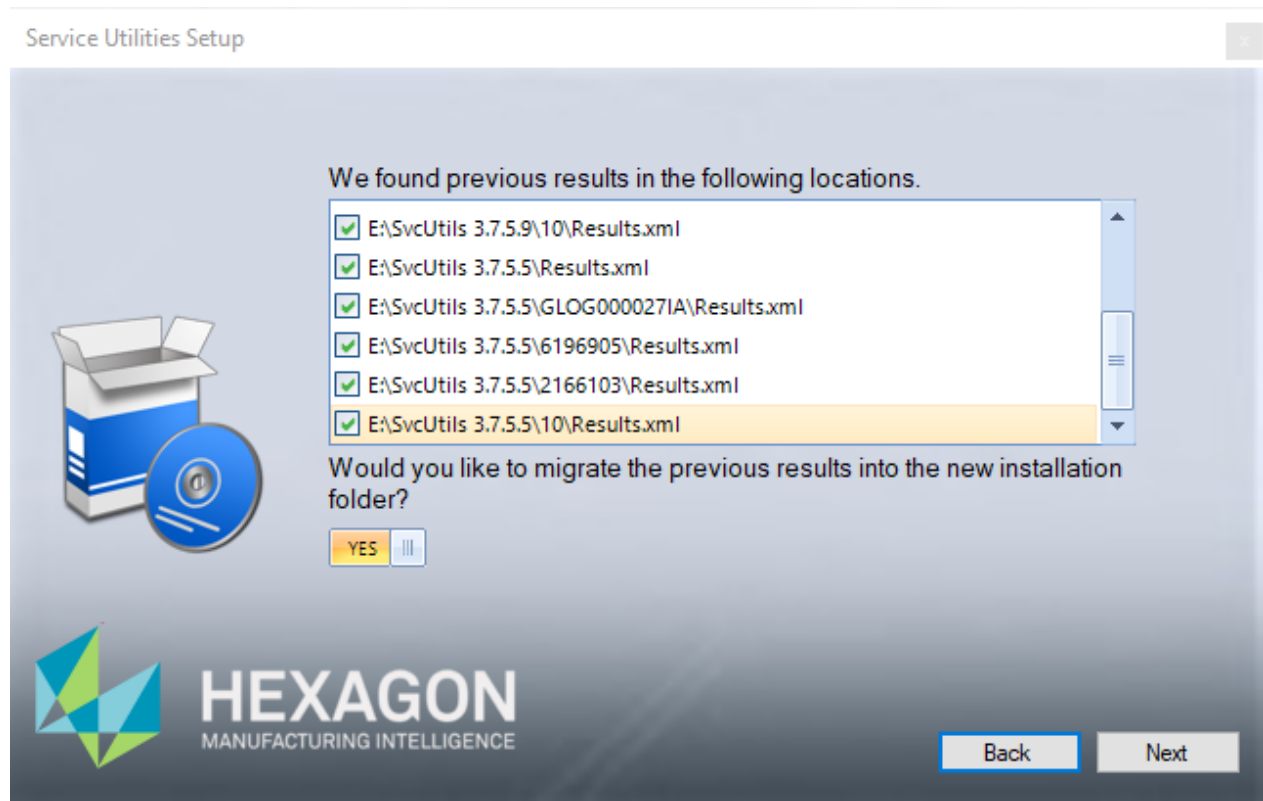


Click on NEXT to continue with the Service Utilities Setup.



Service Utilities Setup application

The application will search through the Drive selected for any previous results.xml files.



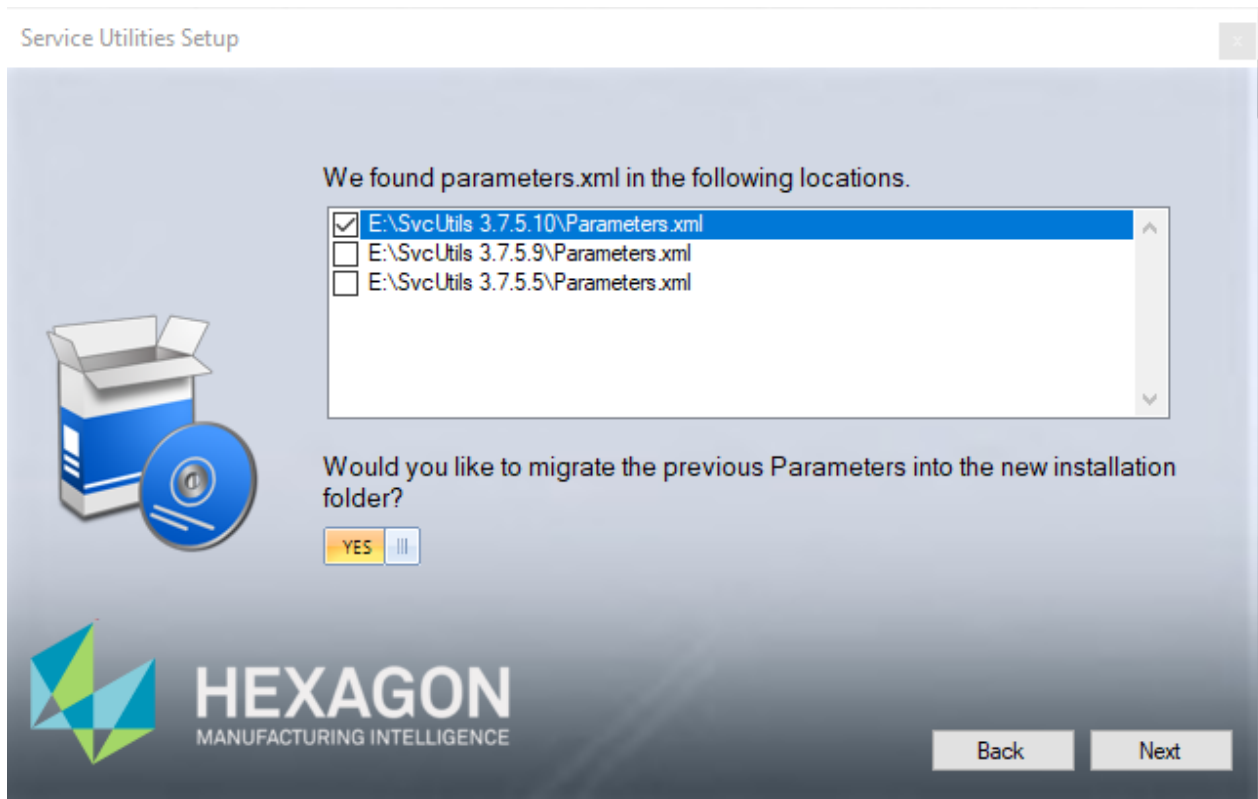
You have the option to migrate any or all of these Results history to the new installation directory by selecting the checkbox next to each results file found.

Clicking on the Yes/No toggle switch will turn off the migration feature.

Click on the next button.

Service Utilities Setup application

The application will search through the Drive selected for any previous Parameters.xml files.

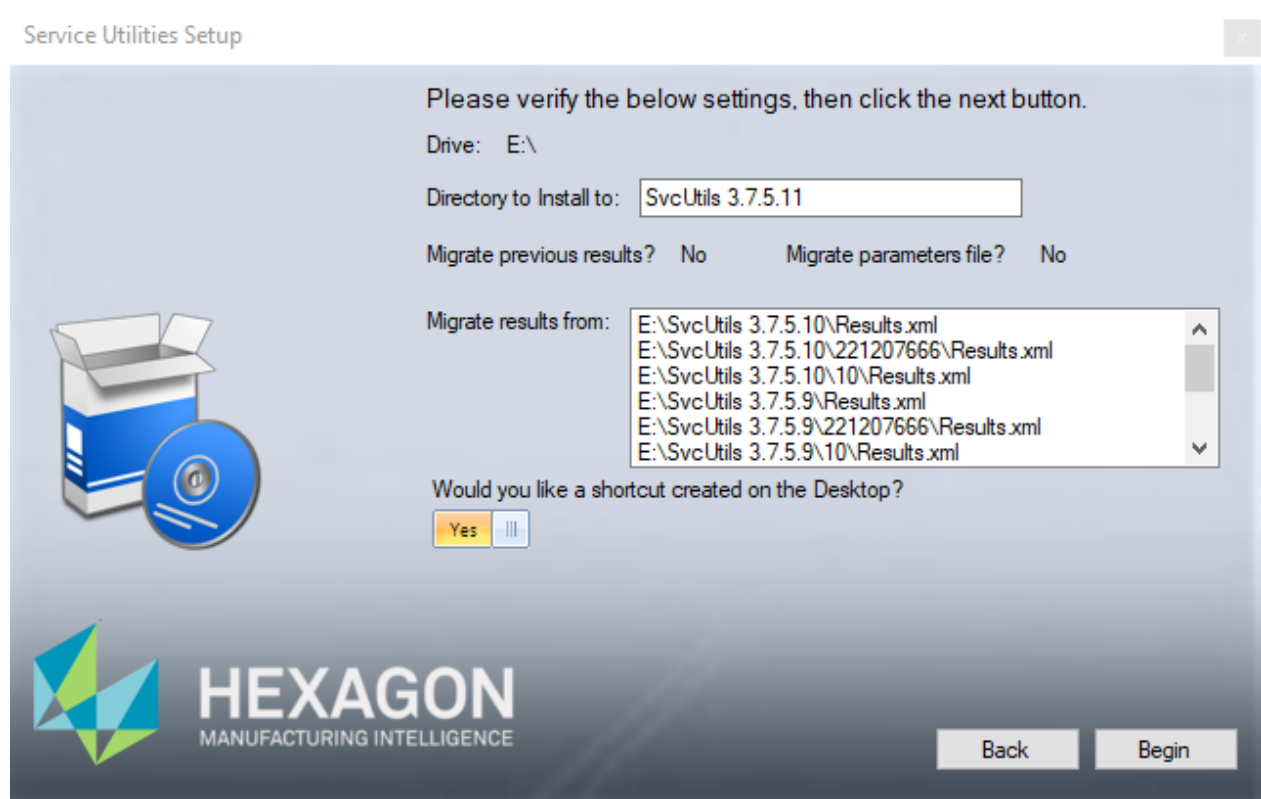


You have the option to migrate one of these Parameter files to the new installation directory by selecting the checkbox next to the one that you want.

Clicking on the Yes/No toggle switch will turn off this Parameters migration feature. (if you select not to migrate any Parameters the Default parameters will be automatically loaded)

Click on the next button.

Service Utilities Setup application



This screen will display which drive the application will install on.

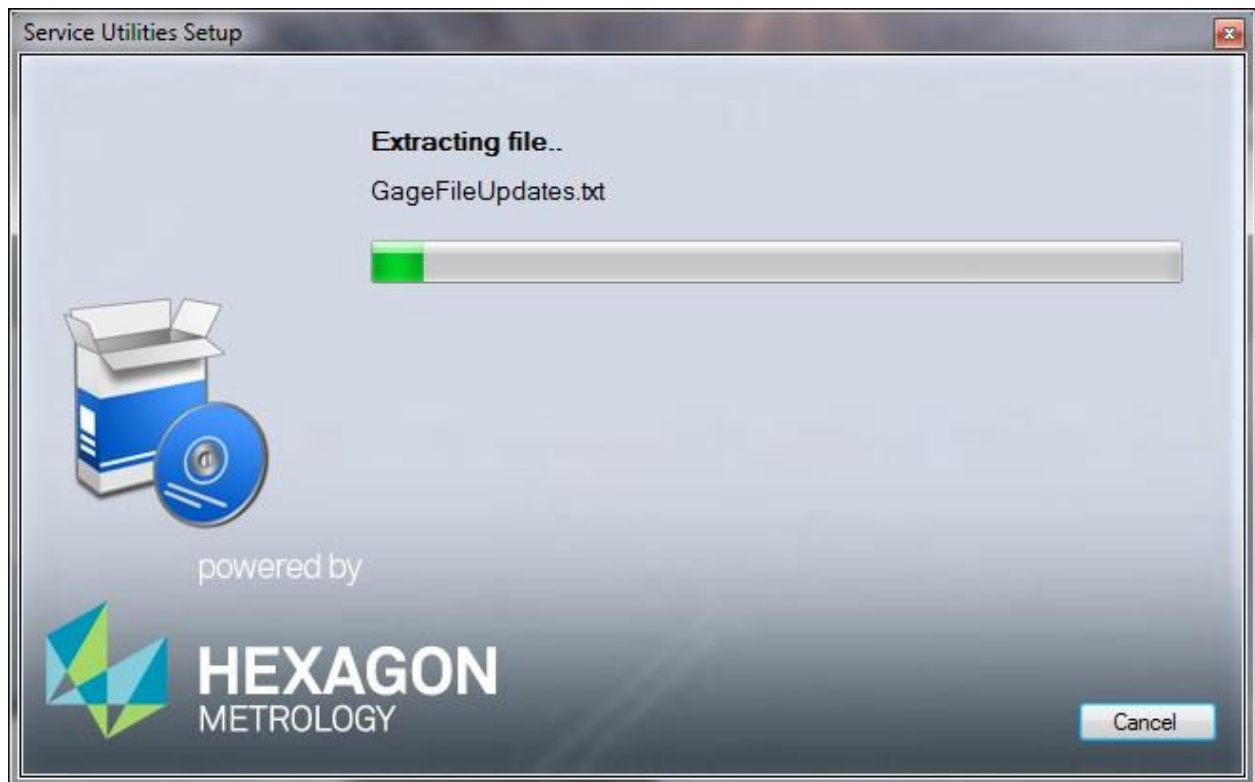
The directory to install onto will be displayed. Here you can change which directory the application will be installed into.

The status of the Results and Parameters migration results are displayed.

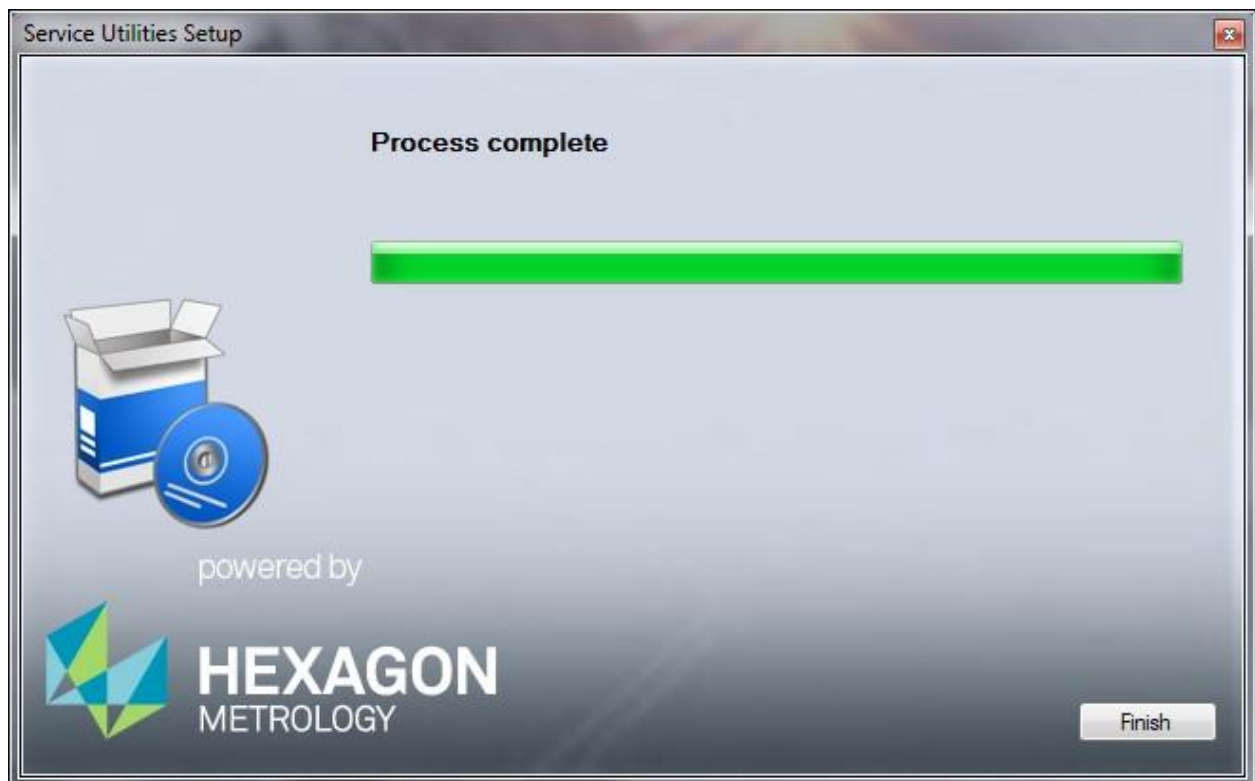
You are also be given the ability to create a Desktop Shortcut to the final executable for Service Utilities.

Clicking on the begin button will begin the installation process.

Service Utilities Setup application



Click on the cancel button will roll back any changes made and exit the application.



Click on the finish button to end the application.